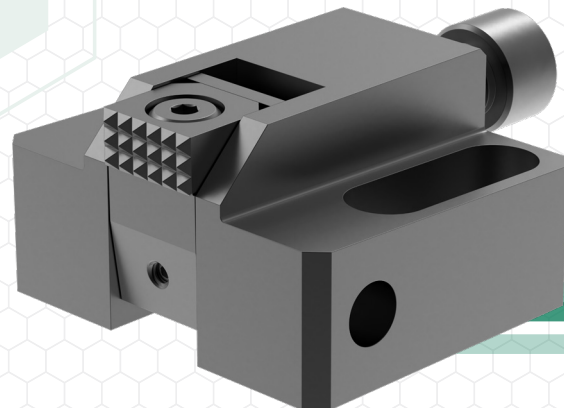


Pivoting Edge Clamps

Pivoting Edge Clamp



Low-Profile
Pivoting Edge Clamp



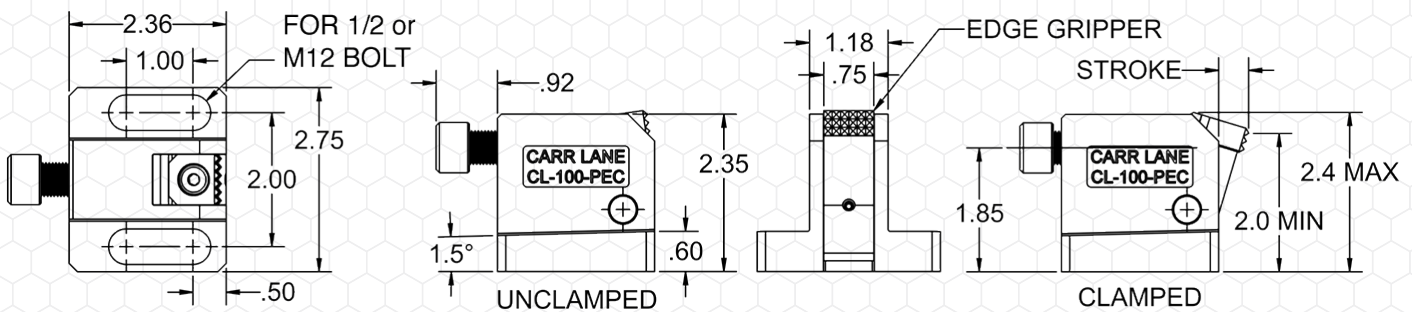
- Pivoting Jaw includes a replaceable serrated gripper
- Slotted base provides maximum adjustability
- Tapered top surface to prevent the clamp from moving
- Can be easily converted from mechanical to hydraulic by installing threaded hydraulic cylinder

Technical

- The pivoting jaw exerts clamping force forward and downward simultaneously.
- The jaw has a replaceable serrated gripper made of hardened tool steel for high-production durability.
- The slotted base provides adjustability and has a tapered top surface to prevent the clamp from moving.
- Fasten with two Socket-Head Cap Screws.

Pivoting Edge Clamp

PART NO.	MAXIMUM CLAMPING STROKE	MOUNTING SCREW SIZE	THRUST SCREW SIZE	BALL-END THRUST SCREW (FINISHED)	EDGE GRIPPER (FINISHED)
CL-100-PEC	1/2	1/2-13 OR M12	1/2-20	CL-80-BTS-1.75	CL-12-EG-6



Low Profile Pivoting Edge Clamp

PART NO.	MAXIMUM CLAMPING STROKE	MOUNTING SCREW SIZE	THRUST SCREW SIZE	BALL-END THRUST SCREW (FINISHED)	EDGE GRIPPER (FINISHED)
CL-101-PEC	3/8	1/2-13 or M12	1/2-20	CL-80-BTS-1.75	CL-12-EG-6

